

Elliot Chair ELLIO-CH



DIMENSIONS

OVERALL HEIGHT (IN)	34.5
OVERALL WIDTH (IN)	18.75
OVERALL DEPTH (IN)	22
SEAT HEIGHT (IN)	18.25
SEAT WIDTH (IN)	18.75
SEAT DEPTH (IN)	17
WEIGHT (LB)	20
STACKABLE	No

Dimensions and weights are an approximation for reference only.

MATERIALS

- 16-gauge steel frame
- Solid, distressed oak wood seat and back
- Non-marring poly floor glides

OPTIONS

- Wood or black vinyl seat

WARRANTY

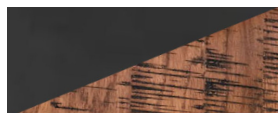
- 3-year limited warranty on the frame
- 1-year warranty on seat and back
- Indoor use only

ASSEMBLY

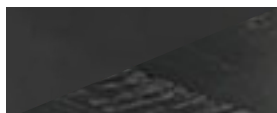
- Some assembly required
- Tools needed - Phillips head screwdriver
- Hardware included - 4 screws (3/4")

The purchaser is responsible for the routine maintenance, care, and inspection of all furniture to ensure safety, functionality, and longevity. Regular checks for loose hardware, structural integrity (welds), and general wear and tear are recommended. Failure to properly maintain the furniture may result in premature wear or potential safety hazards, for which the seller assumes no liability.

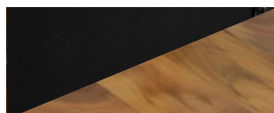
STANDARD FINISHES



Weathered Iron Frame
Distressed Oak Wood



Weathered Iron Frame
Black Wood



Black Frame
Walnut Wood